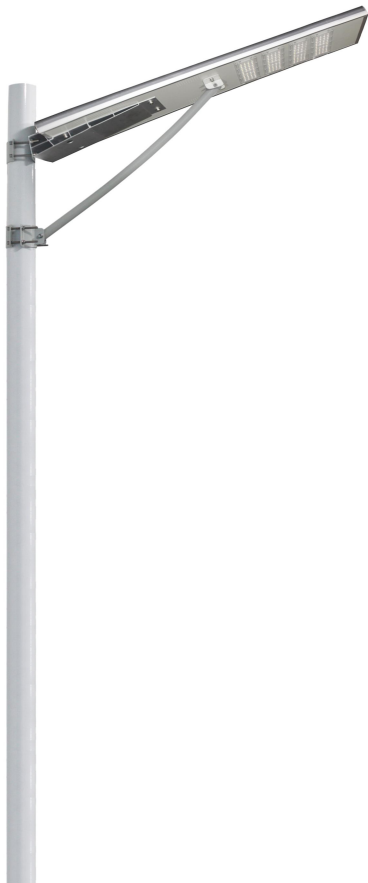


Solar street light PRODUCT SPECIFICAT

Product name: LED integrated solar street lamp

model	configuration
T4-30	SMD3030+Ternary Lithium battery
T42-40	
T5-50	
T52-60	
T6-80	
T7-100	



1、Product features, features, and scope of application

(1) 、Product features:

Integrated design, simple, portable and practical;Using solar power to save energy and protect the earth's resources;Human infrared induction control technology, light control + time control, overshoot protection, half power control, etc.People come to the light, people go to the light dark, lengthen the lighting time;Use high capacity and long life ternary lithium battery to ensure the service life of the product;No wire drawing, the installation is extremely convenient;Waterproof structure, safe and reliable;It can extend timing and sense its functions.The modular design concept of light source is convenient for installation, maintenance and maintenance. Aluminum is used as the main structure of the shell, with good anti-rust and anti-corrosion function

(2) 、Structural features of lamps:

Main components: all-in-one (built-in: high efficiency monocrystalline silicon photovoltaic module, large capacity ternary lithium battery, PPT intelligent controller, high brightness LED light source, PIR human induction probe, mounting bracket) composition

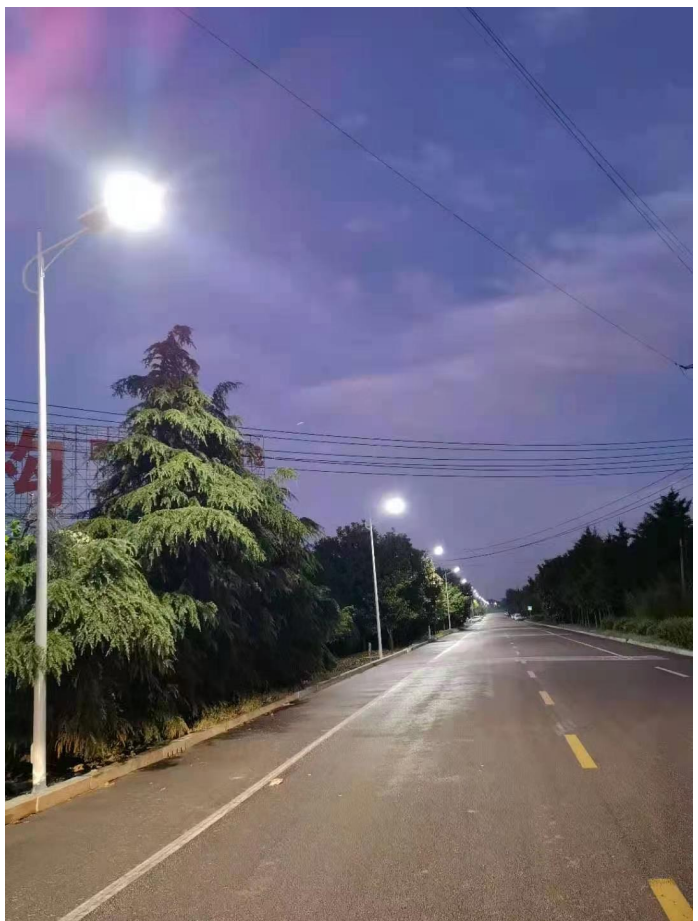
(3) 、The working principle of:

The integrated solar street lamp converts solar panels into electricity and then recharges the lithium-ion batteries in the lamp.During the day, even in the cloudy day, the solar energy generator (solar panels) collected, stored energy needs, night automatically supplied to the LED power supply, integrated solar street lamps lighting at night, at the same time, the integration of solar street lamps have PIR sensor body functions, can realize the intelligence of the human body infrared induction control at night work mode, 100% brightness, no person extended when someone automatically change over time to a third brightness, intelligent energy saving more energy.

(4) 、Scope of application:

It is suitable for lighting of outdoor engineering projects, urban roads, community squares, industrial parks, tourist attractions, parks and other factories.

(5) 、Use scenarios and engineering cases:



2、Product data :

Power	Model	Soar panes	battery	LED chips	Product Size	Packaging	N. W (KG)	Installation Height
30W	T4	18V/40W	12. 6V/16AH	96pcs	920*300*90 mm	97. 5*35. 5*13cm	9 kg	5-6 M
40W	T42	18V/50W	12. 6V/16AH	96pcs	785*370*90 mm	85*41*12. 5cm	9. 5 kg	5-6 M
50W	T5	18V/70W	12. 6V/26. 4AH	144pcs	1150*300*90 mm	122*34. 5*15. 5cm	13 kg	6-7 M
60W	T52	18V/80W	12. 6V/26. 4A	144PCS	1000*370*90 mm	105*43*13cm	11 kg	7-8 M
80W	T6	18V/100W	12. 6V/50AH	192pcs	1170*425*90 mm	122*47. 5*13cm	16 kg	8-10 M
100W	T62	18V/120W	12. 6V/55AH	192pcs	1400*540*140 mm	141*49*18cm	21 kg	10-11 M
120W	T7	18V/150W	26. 4V/40AH	192pcs	1400*540*140 mm	145*58*18. 5cm	25 kg	11-12 M

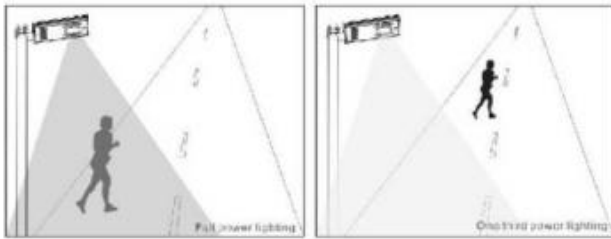
Product Material	Working temperature	Color temperature	Light Angel	Light Model
Aluminum	-20~+70℃	2700-6500K	70+140°	Light sensor+move sensor+Time control

3、Solar lamp structure (component)

PV panel, aluminum housing, PWM controller, ternary lithium battery, light source (chip), sensor, switch button



4、 Installation instructions

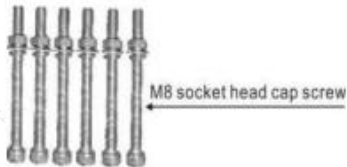


Installation steps

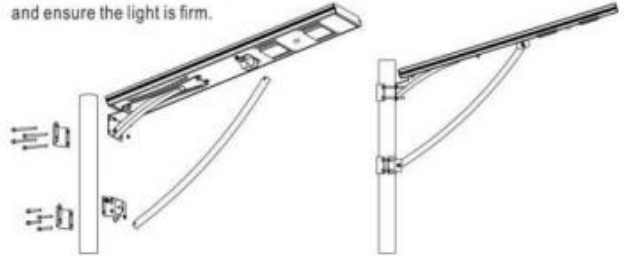
- (1) Select the best day-lighting location to set up the pole. Pole 3-7 meters high is appropriate, diameter 40 ~ 100mm, Thickness more than 2.0mm iron rod or steel rod.
- (2) Open the packaging and check if components are completed. Contained components as follows

- (3) Turn on the switch before installation.

Switch



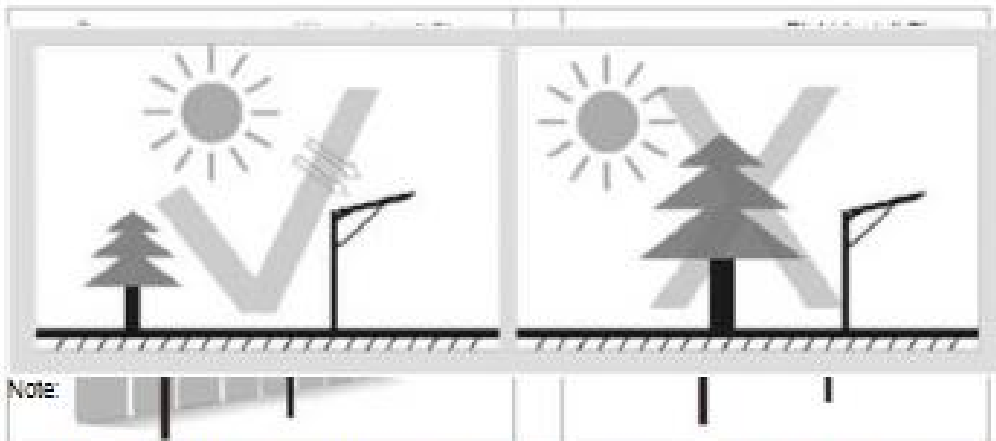
- (4) Put integrated solar light into the pole, fasten the screws with special tools, and ensure the light is firm.



Maintenance

- (1) Solar controller is the core component of solar street lights, which has the function of light control, time control, charging and discharging, etc. Keep it dry in use, and do not touch the buttons at discretion. Malfunction must be in professional operation;
- (2) Solar panel is the longest service life of component in the solar street light, which can be used for 35 years. And in use if it doesn't rain for days, the surface of the solar panel will gather much soil dust, which will affect the power generating efficiency manual cleaning when necessary. Keep the solar panel towards the south, correct it timely if there is swing;
- (3) LED light source has a long service life, general failure rate is extremely low. Dirt cleaning of the whole light source is needed when using 2 to 3 years in case the dirt resists electricity and reduce the brightness of lights;
- (4) The battery itself has certain self-discharge, when the integrated solar light is not in use for a long time, please take out the light regularly for charging in the sun.

Troubleshooting



- ★ When install the integrated solar led street, please choose a position with enough sunshine and fully exposure. Please note the solar panel must be fully exposed, without any shelter.

5、Packaging information:



6、Quality assurance, after-sales service, other requirements

The whole lamp of our company is guaranteed for 3 years. Quality assurance is based on the correct preservation, installation, use and maintenance of products; Product damage caused by improper installation and use and violation of product operating rules shall not be covered by this warranty. For the quality problems within the warranty period, the company will choose to repair, replace (parts) or replace new products during the warranty period. Material and labor fees will be charged when the quality warranty period is expired.